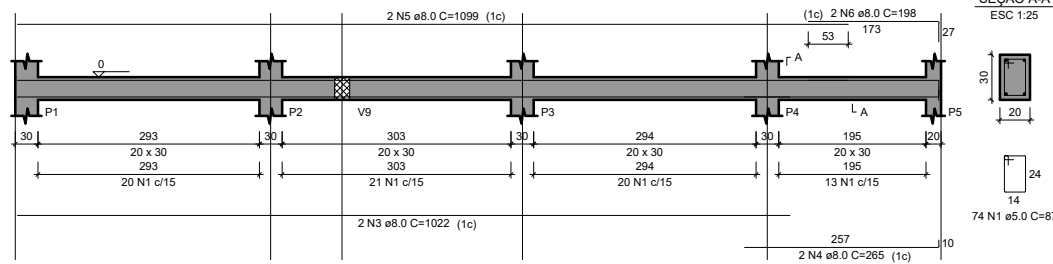
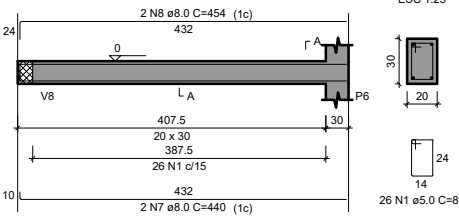


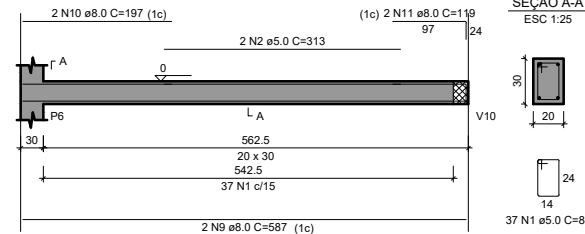
V1  
ESC 1:50



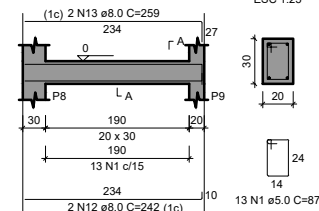
V2  
ESC 1:50



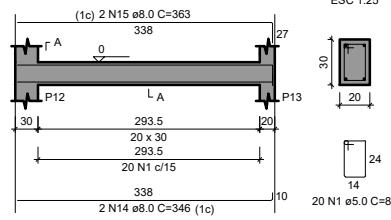
V3  
ESC 1:50



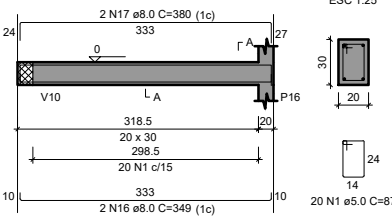
V4  
ESC 1:50



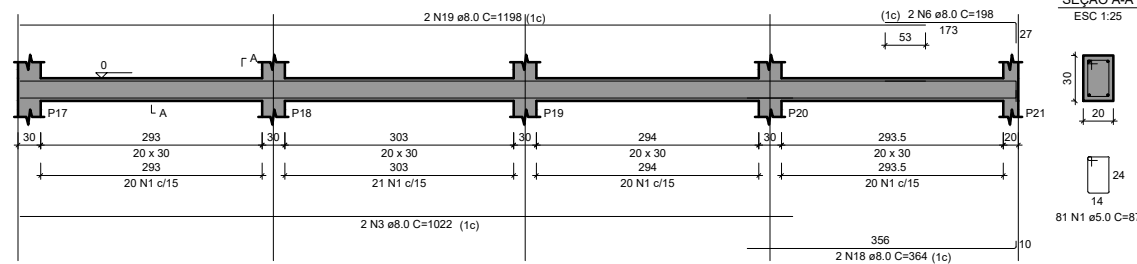
V5  
ESC 1:50



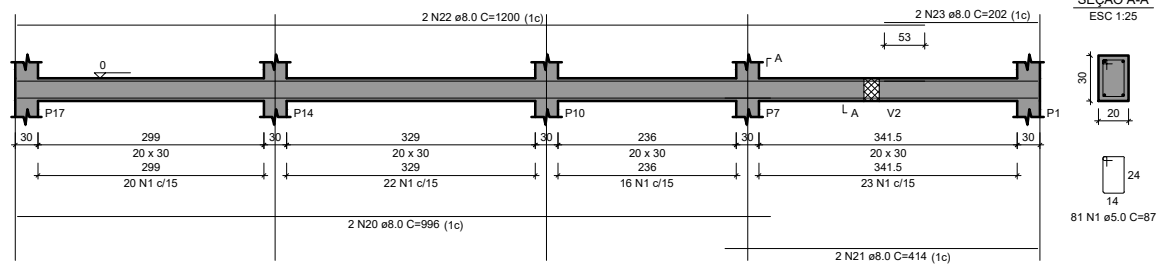
V6  
ESC 1:50



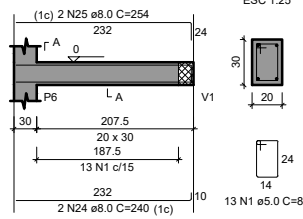
V7  
ESC 1:50



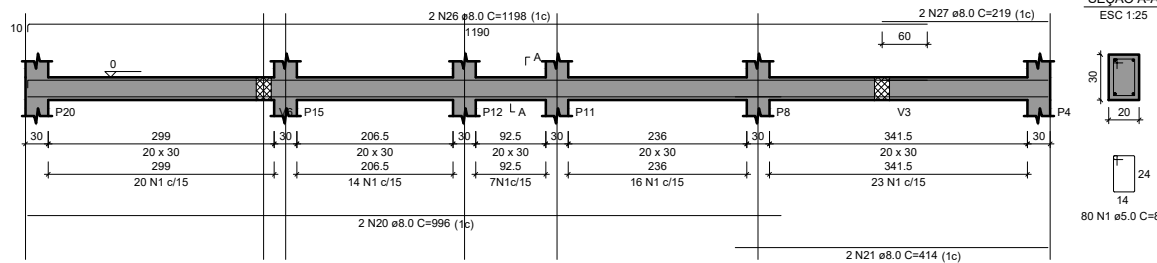
V8  
ESC 1:50



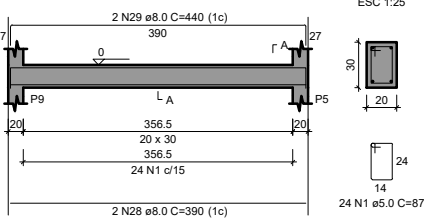
V9  
ESC 1:50



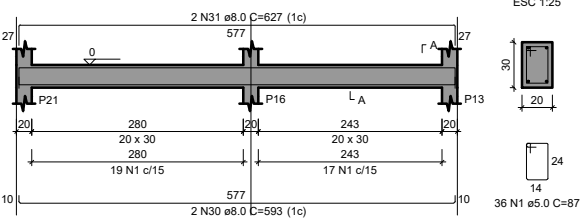
V10  
ESC 1:50



V11  
ESC 1:50



V12  
ESC 1:50



RELAÇÃO DO AÇO

AÇO	N	DIAM (mm)	QUANT	C.UNIT (cm)	C.TOTAL (cm)
CA60	1	5.0	505	87	43935
CA50	2	5.0	2	313	626
	3	8.0	4	1022	4088
	4	8.0	2	265	530
	5	8.0	2	1099	2198
	6	8.0	4	198	792
	7	8.0	2	440	880
	8	8.0	2	454	908
	9	8.0	2	587	1174
	10	8.0	2	197	394
	11	8.0	2	119	238
	12	8.0	2	242	484
	13	8.0	2	259	518
	14	8.0	2	346	692
	15	8.0	2	363	726
	16	8.0	2	349	698
	17	8.0	2	380	760
	18	8.0	2	364	728
	19	8.0	2	1198	2396
	20	8.0	4	996	3984
	21	8.0	4	414	1656
	22	8.0	2	1200	2400
	23	8.0	2	202	404
	24	8.0	2	240	480
	25	8.0	2	254	508
	26	8.0	2	1198	2396
	27	8.0	2	219	438
	28	8.0	2	390	780
	29	8.0	2	440	880
	30	8.0	2	593	1186
	31	8.0	2	627	1254

RESUMO DO AÇO

AÇO	DIAM (mm)	C.TOTAL (m)	PESO + 10% (kg)
CA50	8.0	345.7	150
CA60	5.0	445.6	75.6
PESO TOTAL (kg)			
CA50	150		
CA60	75.6		

Volume de concreto (C-25) = 5.06 m³  
Área de forma = 67.43 m²

## PREFEITURA MUNICIPAL DE TUCUNDUVA

Secretaria de Obras, Viação e Serviços Urbanos

GESTÃO:

2017-2020

Obra:

SALÃO PONTE PRATOS

RUA SANTA ROSA, 520  
CENTRO  
TUCUNDUVA-RS  
Fone: (55) 3542-1022

PROPRIETÁRIO: Prefeitura Municipal de Tucunduva

RESP.TÉCNICO: ENG. CIVIL JOÃO BOEIRA CREA 46750/RS

ÁREA:

170m²

ESCALA:

1/100

Projeto Estrutural

PRANCHA:

6Es

REVISÃO:

DATA: DEZEMBRO DE 2019

DESENHO: Juliana Bohun